

# Atomy Absolute Spot-Out Cream



## ATOMY ABSOLUTE Spot-Out Cream

Another magical product that answers  
the basic challenges of skin whitening



## Adding the magic of Spot-Out Cream to the **astonishment of Spot-Out Essence!**

Absolute dermatology that provides a new era of spot-out effectiveness by systematically responding to the root cause of skin darkening with Spot-Out Essence

Now,  
feel the difference of skin radiance through the acceleration of epidermal turnover,  
as well as immediate skin tone-up effects from anti-photoaging and colour control!  
We give you another magical product for your skin whitening.

Another magical product that answers the basic challenges of skin whitening  
**Absolute Spot-Out Cream**



# Product Detail



**Another magical product that answers the basic challenges of skin whitening**

A magical skin whitening cream unveiled through Absolute science for brilliant skin radiance and immediate skin tone-up

Volume

50ml

R&D

Kolmar BNH (SBT)

Manufacturer

Kolmar Korea Co., Ltd.



Removes even microscopic blemishes with  
<CellActive™ Brightening Code> and  
<Effective Brightening Concentrate Ingredients>

**6-Step Mechanism for 'DARK SPOT OUT'**

A 6-step whitening mechanism offered exclusively by Atomy that achieves brightening at the root by managing the entire process.



UV ray exposure



# 1<sup>st</sup> STEP

## Brighten with CellActive™ Brightening Code

### Core technology and core ingredients for overall skin whitening

<CellActive™ Technology> precisely delivers the effective ingredients to address skin troubles like melanin enzyme production and Absolute Spot-Out Cream' maximizes the whitening effect by adding a high concentration of the effective ingredient <Brightening Code> as a main ingredient.

#### CellActive™ Brightening Code

##### 1. CellActive™ Technology

Cutting-edge technology for quick and exact delivery of vitalizing active ingredients to areas with skin troubles

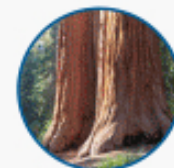


##### 2. Brightening Code™

Atomy's ingredient technology that upgraded efficiency by combining valuable materials that are effective for whitening in an optimum ratio.



Dormin  
(Dragon fruit extract)



Yosemite ferment  
filtrate



Lupine protein  
(Lupine flowers)

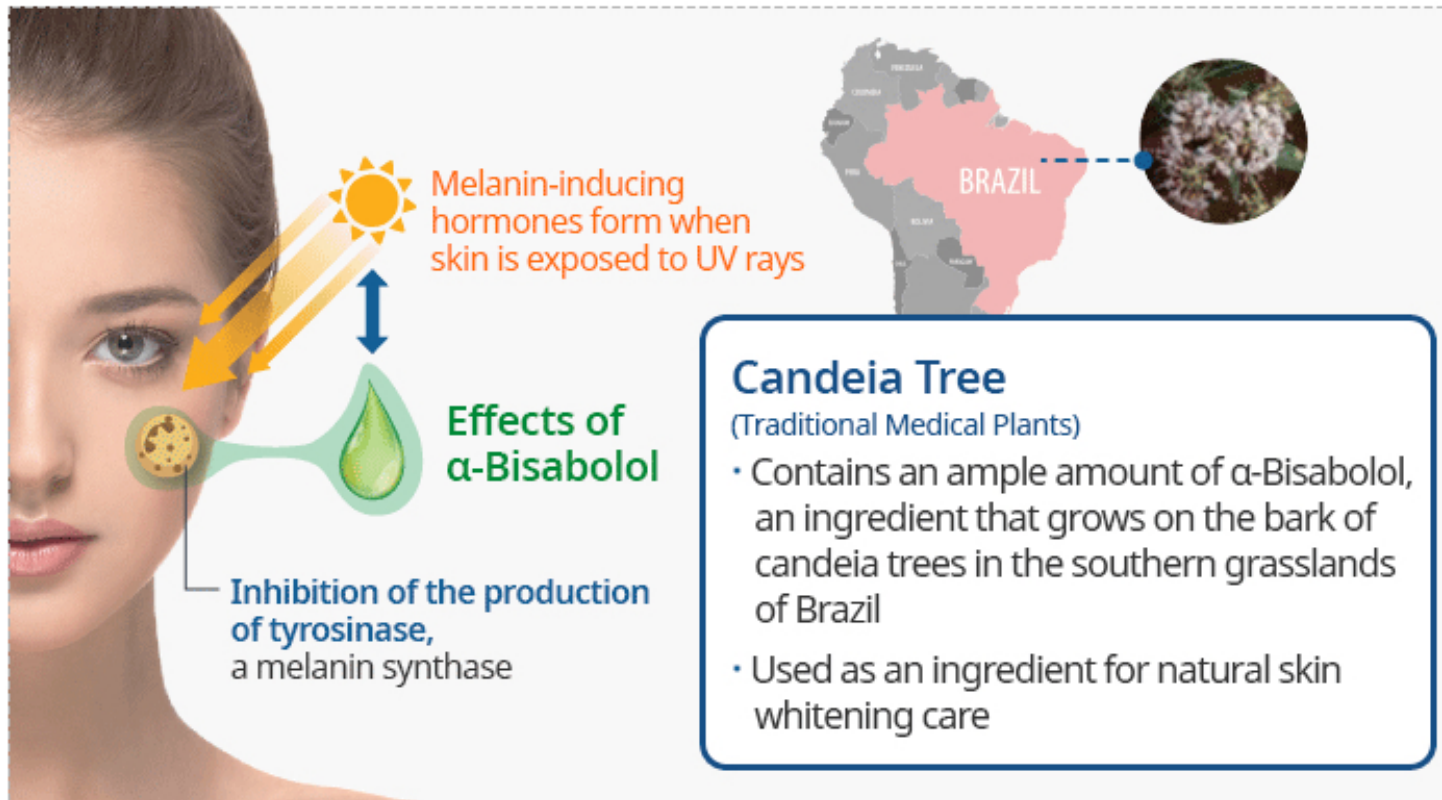
## 2<sup>nd</sup> STEP

Block the formation of melanin enzymes!

### Inhibition of the production of melanin enzyme

#### $\alpha$ -Bisabolol

- A natural ingredient extracted from candeia trees
- Controls the inhibition of tyrosinase, a melanin synthase
- Relieves skin redness to help brighten your skin



Melanin-inducing hormones form when skin is exposed to UV rays

**Effects of  $\alpha$ -Bisabolol**

Inhibition of the production of tyrosinase, a melanin synthase

**Candeia Tree**  
(Traditional Medical Plants)

- Contains an ample amount of  $\alpha$ -Bisabolol, an ingredient that grows on the bark of candeia trees in the southern grasslands of Brazil
- Used as an ingredient for natural skin whitening care



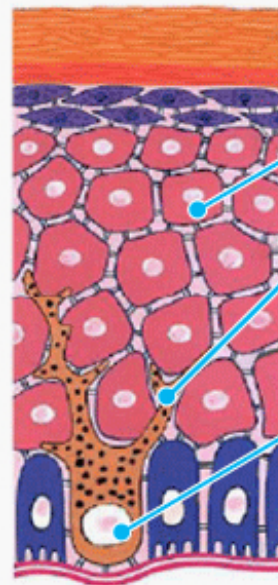
## 4<sup>th</sup> STEP

# Prevent the transfer of melanin to the skin stratum corneum

## Skin whitening effect through inhibition of skin stratum corneum transference of melanin

**Niacinamide(VitaminB3)** \*For brightening

- Prevents melanin from making pigmentation in the stratum corneum by controlling the spread of melanin to melanosome, a carrier that moves the produced melanin to the skin.



**Stratum corneum**  
(melanin deposition)

**Keratinocyte**

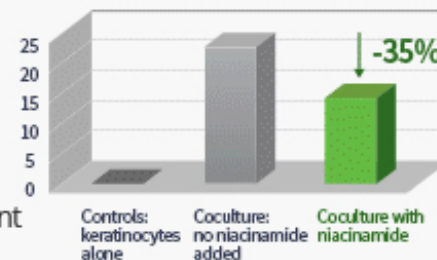
**Melanosom**

- : Carrier of melanin pigment
- : Carries melanin to stratum corneum

**Melanocyte**

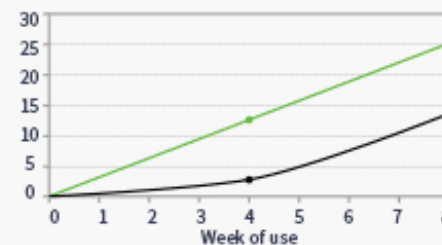
- : Melanin-forming cells

**Stratum basale**  
(melanin production)



**Melanosome production ratio**

- : 35% reduction during Niacinamide process



**Spot reduction effects**

- : 10% reduction after 8 weeks, compared to the control group





## 6<sup>th</sup> STEP

# Tone up your skin with IBR-TCLC

## Skin brightening effect



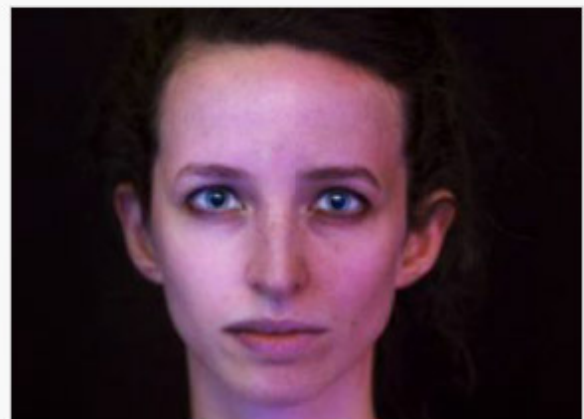
**IBR-TCLC** (natural cartiloids [phytoene and phytofluene])

- For brightened skin tone
  - Helps relieve melanin synthesis by absorbing UV rays

Patent. 10-1448317  
PCT/IL2007/000648



**Photo-aging**



**Hue Cancellation**

**[IBR-TCLC application]**

Measured the chromaticity after exposing to the light the sides that are either applied or not applied with cream

- Increased skin brightness and reduced redness

- Under light, phytoene and phytofluene absorb UVA and UVB, respectively
- Reflects green light that minimizes redness
- Creates vibrant skin by combating photo-aging and through hue cancellation



A magical whitening cream that provides instant,  
powerful, and intensive skin whitening  
and sufficient hydration

## Atomy Absolute Spot Out Cream



whitening



Nutrients



oil



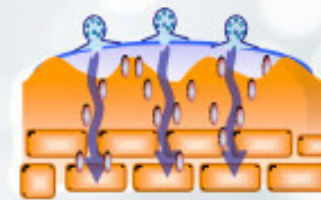
hydration



Fast hydration  
melting



Bulky Gel Network



Hydro Mask Effect

## Texture and effects

### **Creates hydration inside the skin with ample moisture**

- Long lasting moist and nutritious texture by stabilizing silky oil
- Creates hydrating moisture from inside, without stickiness

### **Adhesive and viscous rolling texture and powerful skin whitening effect**

- Provides a long lasting moisturizing effect, with its high volume of nutrients.
- Achieve high-whitening functions by controlling melanin synthase and spread; accelerating skin turnover; controlling photoaging; and controlling pigmentation