

# Atomy Jelly & Color



## Jelly & color

에터미 젤리앤컬러

For Styling & Gray Roots  
Easy and Fun Hair Dye with Elastic Jelly!

4a

Espresso Brown  
에스프레소 브라운

3a

Mocha Brown  
모카 브라운

2a

Cherry Brown  
체리 브라운





# Atomy Jelly & Color

Atomy Jelly & Color  
(For Styling & Gray Roots)

Easy and Fun Hair Dye with Elastic Jelly!

<b>Product name</b>	Atomy Jelly & Color
<b>Volume</b>	Agent 1 (60 ml), Agent 2 (60 ml)
<b>Manufacturer</b>	Distributed by: Atomy Co., Ltd./Manufactured by: Dongsung Bio Pharm. Co., Ltd.
<b>Main Ingredients</b>	<p><b>2a</b> <b>2a Cherry Brown</b>  <b>Agent 1 (60 ml)</b> : p-Amino-o-cresol, p-Aminophenol, p-Phenylenediamine, 2-Methylresorcinol  <b>Agent 2 (60 ml)</b> : Peroxide (35%)</p> <p><b>3a</b> <b>3a Mocha Brown</b>  <b>Agent 1 (60 ml)</b> : p-Phenylenediamine, p-Aminophenol, 2-Methylresorcinol  <b>Agent 2 (60 ml)</b> : Peroxide (35%)</p> <p><b>4a</b> <b>4a Espresso Brown</b>  <b>Agent 1 (60 ml)</b> : p-Phenylenediamine, p-Aminophenol, Resorcinol  <b>Agent 2 (60 ml)</b> : Peroxide (35%)</p>

## Elastic and Moist Jelly Type



Mix agents 1 and 2 and shake gently to make the elastic and moist jelly. It is not runny, to help with easy dyeing and to retain the moisture of the hair.

---

## Convenient Comb-Type Container

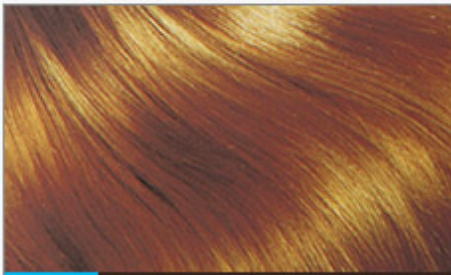


It is comb-shaped and has four outlets to spray the moist jelly dye quick and evenly over the hair.

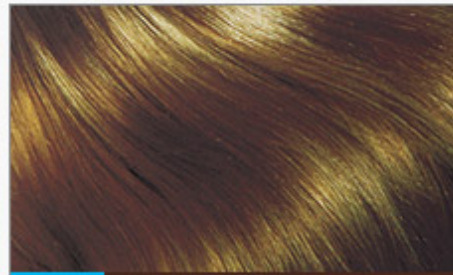
---

## Natural-Looking Color

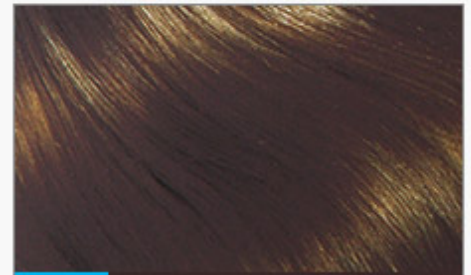
With color implementation that professional hair stylists have hand-picked, it attains natural-looking color on black hair and even graying roots.



**2a** Cherry Brown



**3a** Mocha Brown



**4a** Espresso Brown

## Patented Technology for Dye Permeation and Prevention of UV Light Discoloration

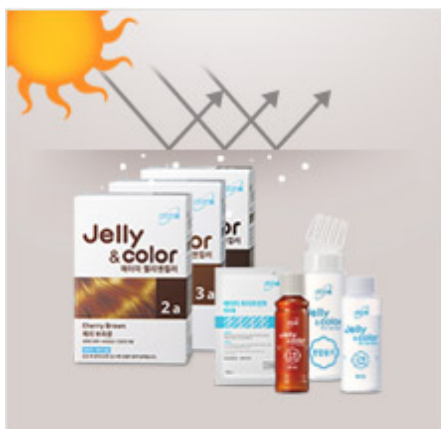
### Dye Permeation Depth



Vegetable protein helps dye permeation for a deep and clear color result. (Patent No. 325985)

Oat extract with amino acids similar to that of hair seeps in naturally together with dye to achieve a long-lasting dye effect that is spot-free, clear, and full.

## Prevention from UV Light Discoloration



The dye includes material that absorbs UV light (OMC) to maintain the color for a long period of time. (Patent No. 665342)

OMC ingredients, which are also used in sunscreen lotion, protect the dye set within the hair from UV light to maintain the color for a long period of time.

## Test Result by the Company's Standards

Color Maintenance (Irradiation with 100% UV Light)	Immediately After Application	After 2 Hours	After 4 Hours	After 6 Hours	After 8 Hours
General Hair Dye	100.0%	85.26%	68.19%	49.26%	34.58%
Hair Dye with OMC	100.0%	98.15%	97.13%	94.49%	89.50%

## 6 Hair Protection Ingredients

### 3 Natural Oils



#### Camellia Oil

Camellia oil rich with oleic acids maintains moisture needed for the hair.



#### Olive Oil

Olive oil rich with unsaturated fatty acids provides nutrients for damaged hair to make it smooth.



#### Avocado Oil

Avocado oil rich with various vitamins and minerals delivers full nutrients to the hair.

## 3 Natural Herb Extracts



### Chamomile Extract

It relieves tension, soothes sensitive and dry skin, and helps maintain beautiful and healthy hair.



### Aloe Extract

It maximizes the soothing effect on the scalp to help care for it and maintain a healthy scalp.



### Sage Extract

Sage, which derives its name from the meaning of "to be healthy," is rich in flavonoids and gives elasticity to weak hair.

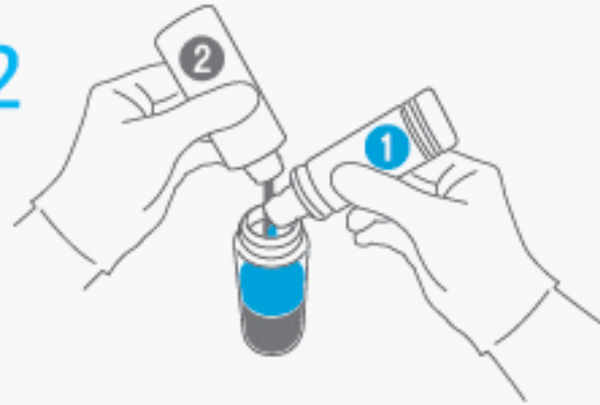
\* The above description is limited to the characteristics of the raw material.

## Prepare for coloring

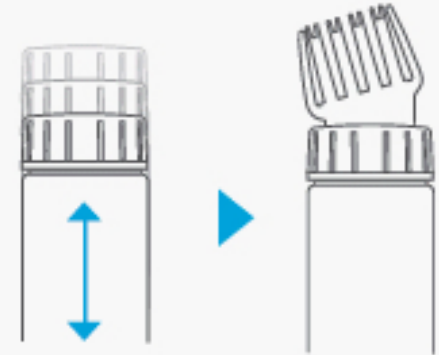
1



2



3



1. Wear gloves before applying color.
2. Combine agents 1 and 2 at a ratio of 1:1 in the mixing container and securely fasten the cap.
  - \* Apply a sufficient amount to hair. The mixed product must be used immediately.
3. After mixing agents 1 and 2, shake well to form the color gel and change the mixing container cap to the comb-type cap.
  - \* Do not shake with the comb-type cap attached.

## Color hair



Do not comb the hair with the comb-shaped container cap.



- 1 Hold the comb-type cap close to scalp and squeeze.



- 2 Massage the color gel into the roots of the hair with fingers in a circular motion and repeat all over.



- 3 Using the remaining color gel, finish thoroughly by applying with fingers to the hairline area, including side burns, in a repeated circular motion.










- 4 Wait approximately [20–30 minutes]

\* For hair that is already brightly colored, the new color will take about 20 minutes.



# Jelly & Color Product Contains

				
1 Hair Dye	2 Oxidizing Agents	Mixing	Comb Cap	Manual
				
Ear Cap	Shoulder Cover	Latex Gloves	Hair Treatment for Dyed Hair	

\* Starch is sprayed inside the latex gloves for easy wear.

## Caution

---

- 1** Consult a dermatologist if signs of irritation and/or side effects appear after use, such as rash or swelling of the area from direct sunlight.
  - 2** Avoid using on areas with wounds.
  - 3** Storage and handling
    - Keep out of the reach of children
    - Store away from direct sunlight
  - 4** If the product enters the eyes, it must be washed out immediately
    - Color may vary for reasons such as coloring time, hair condition, and temperature. Re-coloring hair, which has already been darkly colored to cover gray hair, with a brighter color is difficult.
    - Do not let hair dye or shampoo get in the eyes. If product gets in the eyes, rinse thoroughly for at least 15 minutes with water and seek treatment from a medical specialist.
    - Read instructions thoroughly before use.
- \* This product contains p-phenylenediamine, p-Aminophenol which may cause allergic reactions. Conduct a skin allergy test (patch test) before use.